



PEUGEOT EXPERT

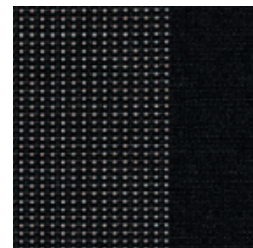
Crew Cab - Pricelist

BASE VEHICLE & POSSIBILITIES

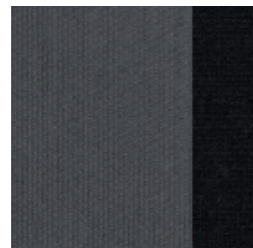
	L3 ESSENTIAL
SLIDING DOOR	
Sliding door right	o
Sliding door left and right	o
Sliding door(s) electric	x
WINDOWS	
Factory fitted windows	o
No factory fitted windows	Δ
OTHER	
Co-driver's seat	o
Co-driver's bench	o
ROOF HEIGHT	
H1	o

o Available
 Δ Available for an additional charge
 x Not available

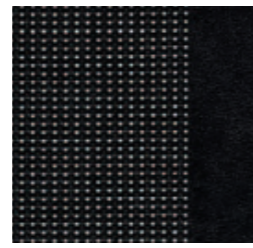
Fabric



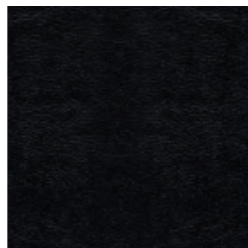
Curitiba Triton
Meltem



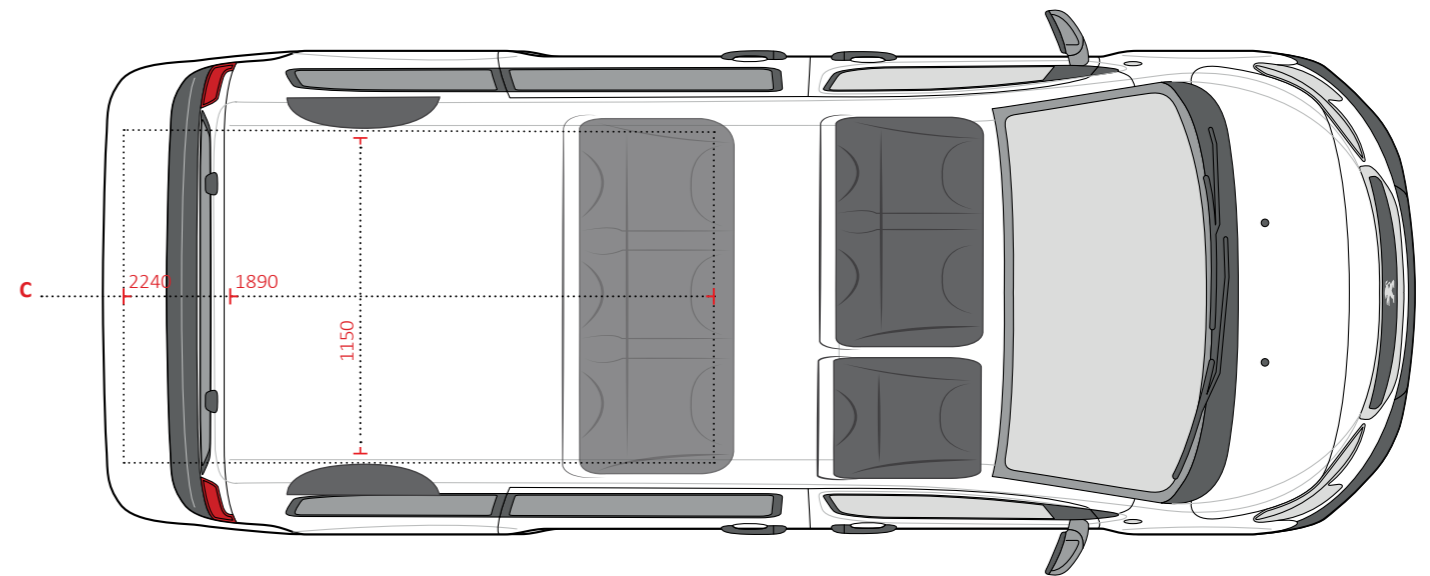
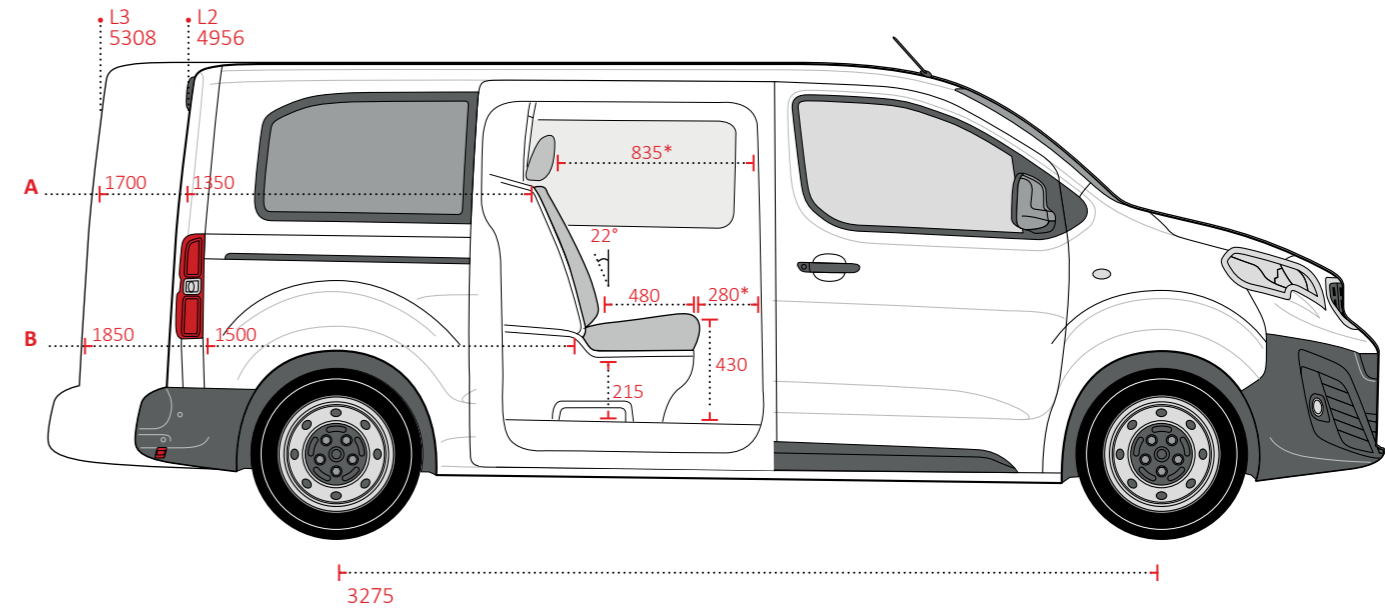
Curitiba
Monoton Bise



Leather - Fabric
Curitiba



Leather



* Measured in relation to fixed co-driver's bench

Note:
Crew cab conversion weight is 105 kg.

Load area	A	B	C
L2	1350	1500	1890
L3	1700	1850	2240

STANDARD EQUIPMENT & OPTIONS

Recommended prices - Peugeot Expert

	ESSENTIAL
BASE VEHICLE	
Gross list price H1	L3 3800
OBLIGATED EXTRA PRICES	
Sliding door left and right	0
Seat Belt Reminder System	220
Disassembly separation wall (Note: no B-pillar cover available)	235
Adjustments to factory fitted wooden floor)	50
Adjustments to factory fitted sidewall finishing	75
WINDOWS	
Window left or right (price per piece)	265
Windows left or right, privacy glass	660
Ceramic windows *	465
ABS PARTITION WALL WITH INTEGRATED SAFETY WINDOW	
Bench cover with storage pocket, additional load space under the bulkhead	■
SEATING	
3-Seater contoured bench with ISOFIX and Top Tether on the two outer seats, covered with cloth as front seats	■
3-Seater with two folding seats with storage pocket (position 2 and 3) and two armrests, covered with cloth as front seats	520
Adjustable head restraints on all seating positions, as front seats	■
3-Point inertia-reel safety belt on all seating positions	■
Protection covers **	80
FLOOR	
Step-in cover plastic, black	■
Step-on cover left fixed wall with bottle holder	■
Floor before 2nd seat row, covered with fixed carpet mat	60
Floor before 2nd seat row, covered with TPO cover	■
ABS floor trim	■

	ESSENTIAL
SIDE-WALL FINISHING	
MDF sidewall finishing, left and right	L3 ■
HEADLINING	
Luxury headlining covered with fabric, with factory fitted light	-
APPROVAL	
Contribution homologation costs	150
■ Standard	Gross prices excl. VAT

Explanation features and options:

Prices only apply in combination with a double cabin kit. Pricing ex-works, a surcharge for single packaging and transport applies.

Please be aware that if a towing hook has to be mounted in the van, this must be done before the installation of the Crew Cab. For further questions, please contact Customer Support +31 (0) 252- 629 529.

Please note: Transport is not included in price.

* Ceramic windows can only be ordered in combination with a Crew Cab.

** Only available in combination with 3 adjustable seats

 info@snoeks.com

 www.snoeks.com

 +31 (0) 252 629 529

 Kunaweg 3, 2153 NC, Nieuw-Vennep, The Netherlands

© Alle rechten voorbehouden. Snoeks Automotive behoudt zich het recht voor om haar producten te wijzigen of te verbeteren en de inhoud van deze brochure te wijzigen zonder verplichting om enige persoon of organisatie op de hoogte te stellen van dergelijke wijzigingen of verbeteringen. De getoonde afbeeldingen kunnen afwijken van het standaard trimlevel.