



**CITROËN JUMPER**  
Crew Cab



# CREW CAB

Citroën Jumper

## The perfect solution

A Citroën Jumper that is equipped with a Crew Cab from Snoeks is the ideal solution for transporting people and cargo safely, comfortably and efficiently.

## Merged Perfection

The Snoeks Crew Cab series is specifically designed for the Citroën Jumper and therefore fits seamlessly into the vehicle and matches the design of the front cab. That is what we like to call, "Merged Perfection".

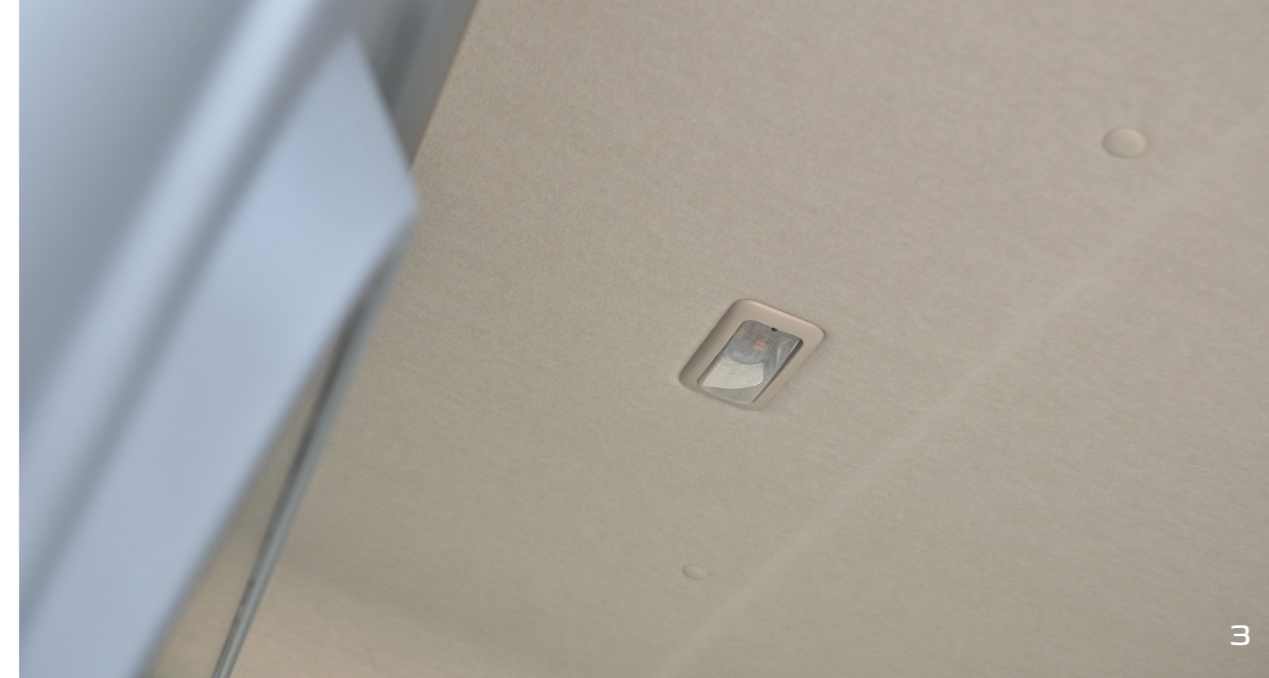
## For every type of Jumper

No matter what type of Jumper you have, we have a suitable Crew Cab in our program. In addition, we offer three different trim levels, with which you can choose the desired equipment level.



**MERGED  
PERFECTION**





# UNIQUE BENEFITS

## Citroën Jumper Crew Cab

### 1. Maximum comfort

A Jumper with a Crew Cab offers up to three additional seats with maximum comfort for your passengers. Optional you can choose a four seater bench

### 2. Maximum load area

Thanks to the clever design of the Crew Cab, the loss of cargo space is minimal.

### 3. Unique character

There is a choice between three Trim levels: Base, Comfort and Luxury. From the Comfortline you receive lighting in the headliner.

### 4. Optimal safety

It goes without saying that our double cabin meets the European safety requirements. For example, all seats are equipped with 3-point belts with belt latch system and adjustable headrests. In addition, the outer seats are equipped with ISOFIX and Top Tether.

### 5. Practical interior

Your passengers can easily store small items in the handy storage compartments in the bench and in the sidewall.

### 6. Your business card

In every detail, the Jumper Crew Cab looks stylish and is completely in line with the design of your Citroën Jumper.

### 7. Long objects

The practical loading space under the bench allows to transport long items.

Specifications above can be different per trim level, view an overview further in this brochure.



# TRIMLEVELS

Citroën Jumper Crew Cab



## Base

- A comfortable three-seater bench
- Adjustable and tilting headrests
- 3-Point inertia-reel safety belt on all seating positions
- Storage pocket in bench cover
- Loading space under the bulkhead
- Wear-resistant floor and step-in cover



## Comfort

extra compared to Base:

- Luxury sidewall finishing including a cupholder
- Headlining covered with fabric incl. lighting



## Luxury

extra compared to Comfort:

- A comfortable three-seater bench with two armrests
- Easy entry with step-in handle
- Luxury sidewall finishing including storage pockets and a cupholder



## Options

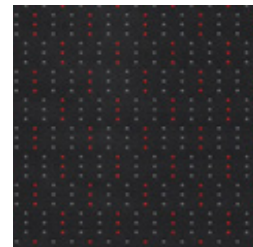
- A comfortable four-seater bench
- Privacy-glass

# BASE VEHICLE & POSSIBILITIES

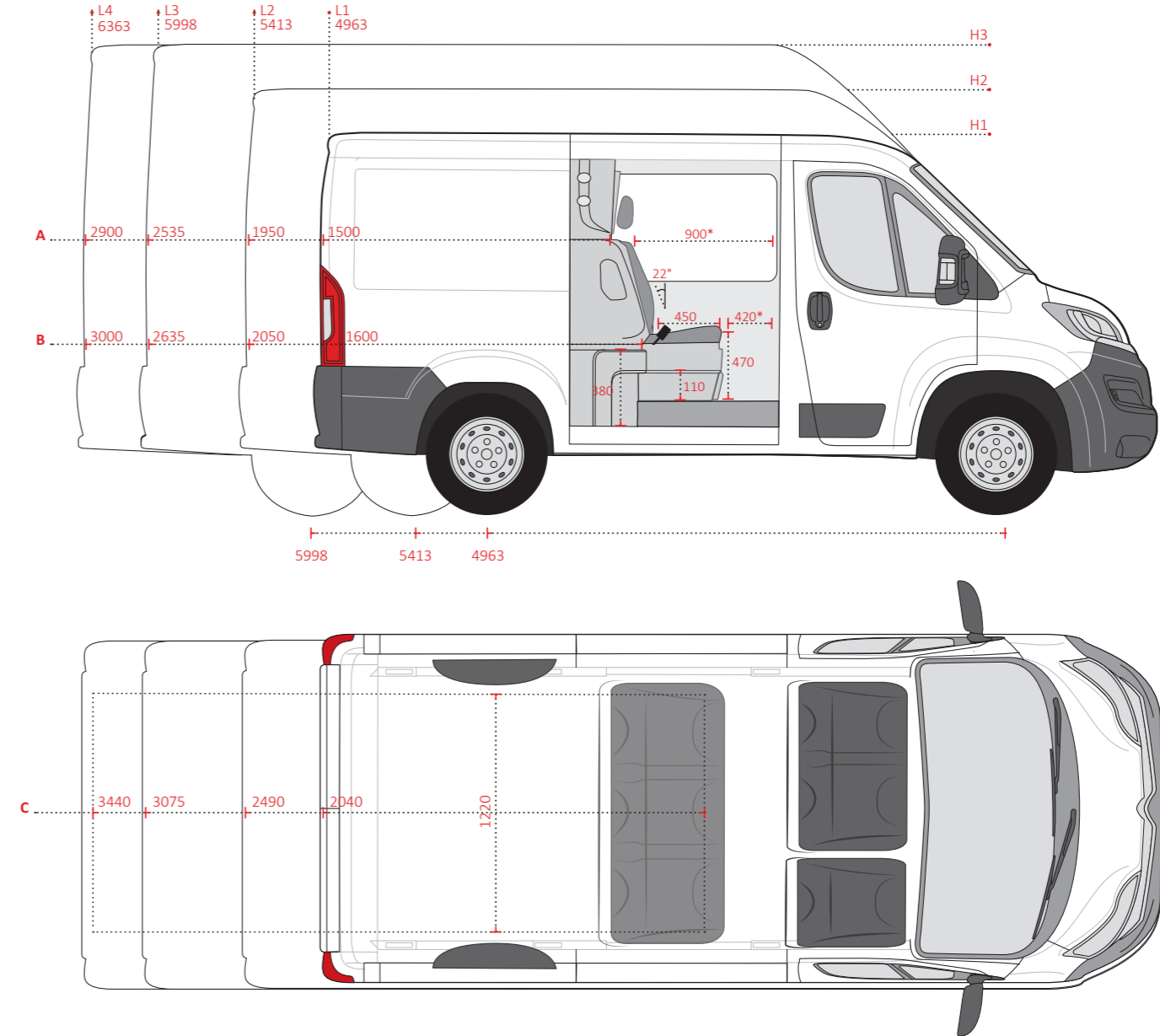
	L1			L2			L3			L4		
	BASE	COMFORT	LUXURY	BASE	COMFORT	LUXURY	BASE	COMFORT	LUXURY	BASE	COMFORT	LUXURY
<b>SLIDING DOOR</b>												
Sliding door right	o	o	o	o	o	o	o	o	o	o	o	o
Sliding door left	o	x	x	o	o	o	o	o	o	o	o	o
Sliding door right and left	Δ	x	x	Δ	Δ	Δ	Δ	Δ	Δ	Δ	Δ	Δ
<b>WINDOWS</b>												
factory fitted window right	o	o	o	o	o	o	o	o	o	o	o	o
Factory fitted window left	o	x	x	o	x	x	o	x	x	o	x	x
No factory fitted windows	Δ	Δ	Δ	Δ	Δ	Δ	Δ	Δ	Δ	Δ	Δ	Δ
<b>OTHER</b>												
Co-driver's seat	o	o	o	o	o	o	o	o	o	o	o	o
Co-driver's bench	o	o	o	o	o	o	o	o	o	o	o	o
<b>ROOF HEIGHT</b>												
H1	o	o	o	o	o	o	x	x	x	x	x	x
H2	x	x	x	o	o	o	o	o	o	o	o	o
H3	x	x	x	x	x	x	x	o	o	x	o	o

o Available  
 Δ Available for an additional charge  
 x Not available

## FABRIC



Magnet



\* Measured in relation to fixed co-driver's bench

**Note:**  
 Crew cab conversion weight is 105 kg.

LOAD AREA	A	B	C
L1	1500	1600	2040
L2	1950	2050	2490
L3	2535	2635	3075
L4	2900	3000	3440

 [info@snoeks.com](mailto:info@snoeks.com)

 [www.snoeks.com](http://www.snoeks.com)

 +31 (0) 252 629 529

 Kunaweg 3, 2153 NC, Nieuw-Vennep, The Netherlands

© All rights reserved. Snoeks Automotive reserves the right to change or improve its products and to make changes in the content of this brochure without obligation to notify any person or organization of such changes or improvements.  
The images shown may differ from the standard trimlevel.